

Risk Assessment of Sex Offenders

Treatment Behavior

Behavior in Group

- Disruptiveness
- Appropriateness of interactions
- Attendance
- Helpfulness
- Level of participation

(Seto & Barbaree, 1999)

Treatment Behavior

Treatment Change

- Change in victim empathy
- Understanding of offense cycle
- Quality of relapse prevention plan

(Seto & Barbaree, 1999)

Psychopaths & Clinical Ratings

PCL 20+

"Good progress" by clinicians =

(Seto & Barbaree, 1999)

Psychopaths & Clinical Ratings

5 times more reoffending
than those with "poor" or "no progress"

(Seto & Barbaree, 1999)

Risk Assessment Impact of Working with Offenders

N = 200 young offenders of all types

Sentence = 2 years

Data:

Presentence

Current offense

Previous convictions

One meeting

(Williams, unpublished)

Risk Assessment: Impact of Working with Offenders

Data:

Original information

Experience of working with offenders for previous
years

(Williams, unpublished)

Risk Assessment:
Impact of Working with Offenders

Outcome

1st Evaluation

Moderate correlation with recidivism

2nd Evaluation

No outcome with recidivism

(Williams, unpublished)

Insanity Acquittes

Psychotic Malingers

PCL-R Total	19	35
-------------	----	----

(Gacono et al., 1995)

Insanity Acquittes

Malingers Psychotic

Sexual with or Married Staff	39%	0%
---------------------------------	-----	----

(Gacono et al., 1995)

Insanity Acquittees

	Malingers	Non
Murder/Attempted	39%	17%
Rape	28%	6%
Rape/Murder	11%	0%

(Gacono et al., 1995)

Clinical vs. Actuarial

N = 136 Studies

64 Actuarial Better
64 Both the same
8 Clinical better

(Grove & Meehl, 1996)

Actuarial vs. Clinical

Clinical had same or more info

(Grove & Meehl, 1996)

Clinical vs. Actuarial

Only studies from psychology & medicine

(Grove et al., 2000)

Clinical vs. Actuarial

"Mechanical predictions are equal or superior to clinical prediction for a wide range of circumstances."

(Grove et al., 2000, p. 19)

What Didn't Make a Difference

Degree of training and experience of clinicians

Types of judges (psychological vs medical)

Relative amount of info for clinicians

Types of info available to clinicians

Hanson Meta-Analysis

61 Studies

N = 28,792

Clinical Vs. Actuarial Assessment

Dixon, 1974

Epperson, Kaul and Huot, 1995

Florida Dept. of Health & Human Services, 1984

Khanna, Brown, Malcolm & Williams, 1989

(Hanson & Bussiere, 1996)

Clinical vs. Actuarial Assessment

Reddon, Studer, and Estrada, 1995

Rice, Quinsey and Harris, 1989

Ryan and Miyoshi, 1990

Schram, Milloy and Rowe, 1991

Smith & Monastersky, 1986

Sturgeon & Taylor, 1986

(Hanson & Bussiere, 1996)

Clinical vs. Actuarial Assessment

	r
Clinical Assessment	.10
Actuarial Assessment	.46

(Hanson & Bussiere, 1998)

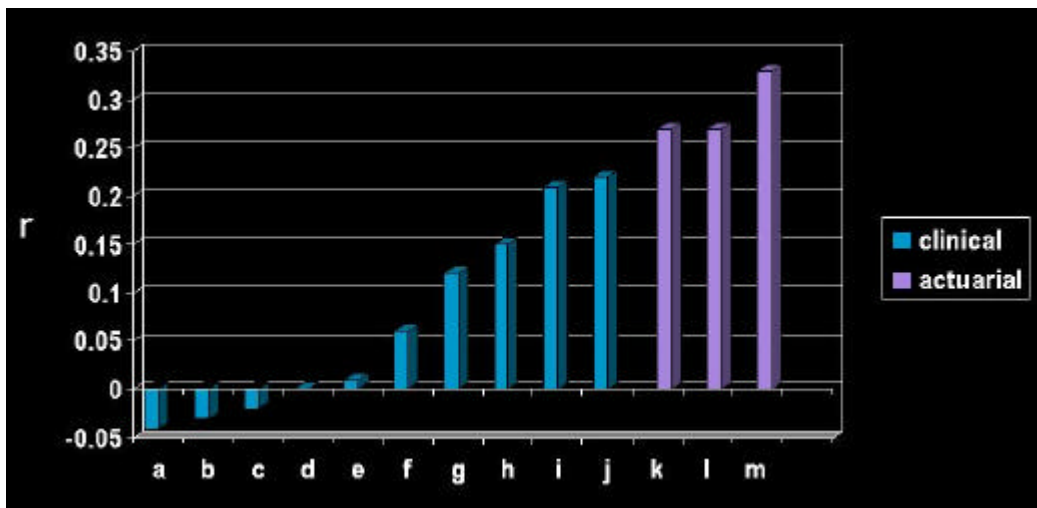
Hanson Clinical vs. Actuarial

Variability of clinical great

Some clinical worse than chance

None of clinical showed results better than worse of
actuarials

Accuracy of Clinical Versus Actuarial



Clinical vs. Actuarial Assessment

r

Clinical Assessment .10

Actuarial Assessment .46

(Hanson & Bussiere, 1996)

Hanson Meta-Analysis Recidivism

Follow-up = 4 - 5 Years

New Sex Offense 13%

Any Offense 37%

(Hanson & Bussiere, 1996)

Long Term Sex Offense Recidivism

Follow-up = 15 to 30 Years

New Sex or Violent Offense

42%

(Hanson, Steffy et al., 1993)

Recidivism

Follow-up = 25 Years

	N	FR
Rapists	136	39%
Child Molesters	115	52%

(Prentky et al., 1997)

Long Term Sex Offense Recidivism

Prior Sex Offenses

Boy Victims

Never Married

77%

(Hanson, Steffy et al., 1993)

Hanson Meta-Analysis

Factor	r
P-graph Arousal to Children	.32
M/F Scale of MMPI	.27
Deviant Sexual Preference	.22
Prior Sex Offenses	.19
Failure to Complete Treatment	.17
Personality Disorder	.16

(Hanson & Bussiere, 1996)

Hanson Meta-Analysis

Factor	r
Negative Relationship w/ Mother	.16
Paranoia Scale - MMPI	.16
Low Treatment Motivation	.15
Stranger vs. Acquaintance	.15
P-graph Arousal to Boys	.14
Antisocial Personality Traits	.14
Victim Female Child	-.14

(Hanson & Bussiere, 1996)

Hanson Meta-Analysis

Factor	r
Age of offender	-.13
Any prior offending	.13
Early Onset of Sexual Offending	.12
Male Child Victim	.11
Single (never married)	.11
Diverse Sex Crimes	.10

(Hanson & Bussiere, 1996)

Hanson Meta-Analysis
Little Correlation

Factor	r
Legally Classified MDSO	.07
Young Child vs. Older	.05
Degree of Sexual Contact	-.03
Empathy for Victims	.03
Social Skills	-.04

(Hanson & Bussiere, 1996)

Hanson Meta-analysis
Little Correlation

Factor	r
Sexually abused as child	-.01
General family problems	.08
General psychological problems	.01
Substance abuse	.03
Alcohol abuse	.00
Poor clinical presentation	.00

(Hanson & Bussiere, 1996)

Hanson Meta-Analysis
Little Correlation

Prior Non-Violent	.0
Force/Injury	.01
Prior Violent Offenses	.05
P-graph Arousal for Rape	.05

(Hanson & Bussiere, 1996)

Hanson Meta-Analysis
Little Correlation

Factor	r
Length of Treatment	.03
Denial	.02

(Hanson & Bussiere, 1996)

STEP Clusters

Cluster A High Deviancy

Cluster B High Denial

Cluster C Low Deviancy

(Beech, 1999)

High Denial Offenders Reclassified

Low Deviance 35

High Deviance 10

(Beech, 1998)

Impact of Treatment

Low Deviancy Group	Over-all Tx Effect
-----------------------	-----------------------

Low Denial	59%
------------	-----

High Denial	17%
-------------	-----

(Beech, 1999)

Impact of Treatment

Group	Pro-offending Attitudes	Over-all Tx Effect
High Deviancy	43%	14%

(Beech, 1999)

Rapid Risk Assessment for Sexual Offense Recidivism

Prior Sexual Offense

Victim Gender

Relationship to Victim

Age at Release

(Hanson, 1997)

Rapid Risk Assessment if Sex Offender Recidivism RRASOR

7 Samples

N = 2,592

(Hanson, 1997)

RRASOR Development Samples

Millbrook Recidivism Study	CSC
Canadian Federal Recidivism	CSC
Institute Philippe Pinel	Psych
Alberta Hospital	Psych
SOTEP	US
Canadian Federal Releases	CSC
Oak Ridge	Psych

(Hanson, 1997)

RRASOR Validation Sample

Her Majesty's Prison Service England

(Hanson, 1997)

RRASOR Development and Validation Samples

Follow-Up Periods

2.4 to 23 Years

(Hanson, 1997)

RRASOR

Prior Sexual Offenses

None	0
1 Conviction; 1 to 2 Charges	1
2 - 3 Convictions: 3 to 5 Charges	2
4 or More; 6 or More Charges	3

(Hanson, 1997)

RRASOR

Age at Release

25+	0
25-	1

RRASOR

Victim Gender

Only Females	0
Any Males	1

RRASOR

Relationship to Victim

Only Related 0

Any Non-Related 1

(Hanson, 1997)

RRASOR

Score 5 Years

10 Years

0 4.4 6.5

1 7.6 11.2

2 14.2 21.1

3 24.8 36.9

4 32.7 48.6

5 49.8 73.1

(Hanson, 1997)

MnSOST-R: Reliability

2 Studies - Acceptable

Barbaree et al. (2001)

(Epperson et al., 1999)

MnSOST-R: Validity

3 studies

2 of 3 Supported

RRASOR: Inter-rater reliability

Tested 3 times – Very high

Sjostedt & Langstrom (1999) – 2 studies

(Barbaree et al., 2001)

RRASOR: Validity

17 Studies

16 Supportive

1 Less So (Epperson et al., 1995)

but

Epperson – no incest offenders; restricted range

RRASOR: Use

Support for validity

Canada
England
Ireland
New Zealand
Sweden
US
Wales

RRASOR: Validity

Correlation coefficients

From

.13 to .58

Static99: Reliability

Tested 3 times – High

Sjostedt & Langstrom (2000)

Barbaree et al. (2001)

Wong et al. (2000)

Static99: Validity

15 studies

All supportive

Static99: Use

Support for Validity

Canada

US

England

Ireland

Sweden

Wales

Information on RRASOR and Static99

www.sgc.gc.ca

Publications

Corrections

Search on Hanson

Information on MnSOST-R

http://129.186.143.73/faculty/epperson/mnsost_download.htm